

74844

PLAT NO. 2 OF

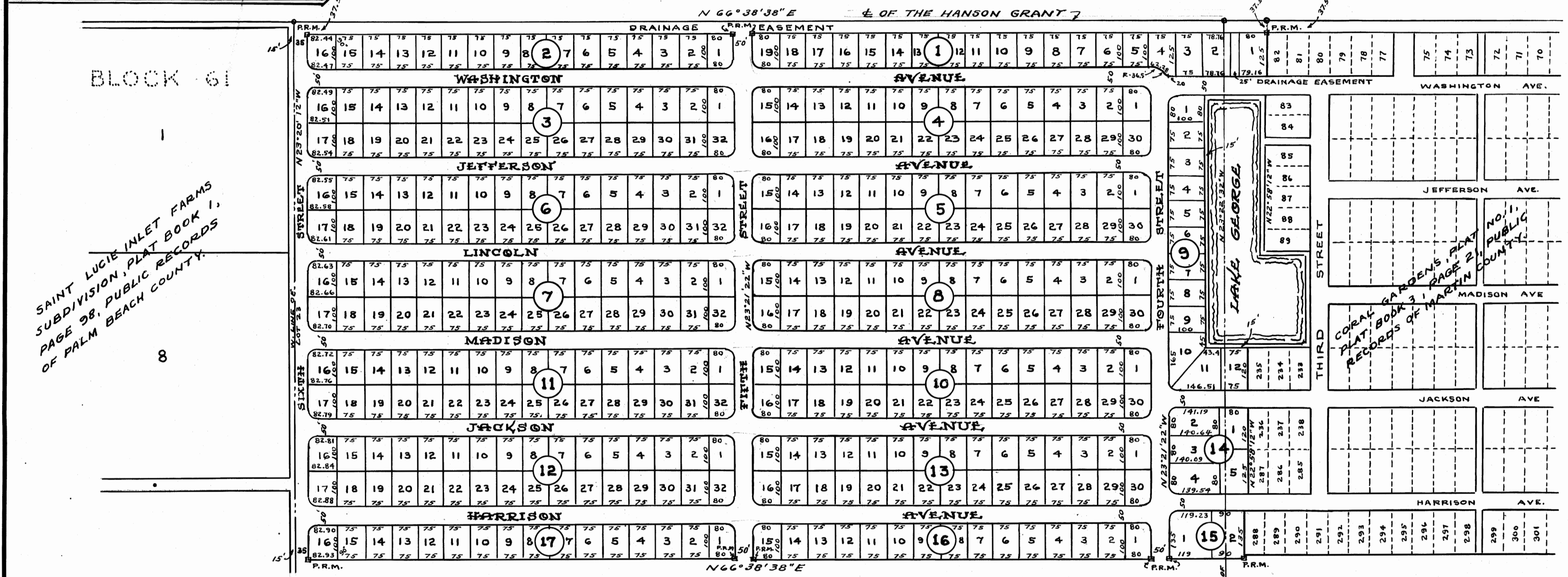
CORAL GARDENS

Being a Subdivision of the north 1537.5' of Lot 23 and that part of the north 1537.5' of the north 6/15 ths of Lots 18, 19, & 20, of the Miles or Hanson Grant, as recorded in Plat Book B, Page 59, Dade County Records, lying westerly of Coral Gardens, Plat No. 1, as recorded in Plat Book 3, Page 21, Public Records of Martin County.

MARTIN COUNTY, FLORIDA.

SCALE 1" = 200'

I HEREBY CERTIFY THAT I HAVE EXAMINED THE ATTACHED PLAT AND FIND THAT IT COMPLIES, IN FORM, WITH CHAPTER 177, FLORIDA STATUTES, AND WAS FILED FOR RECORD THIS 22nd DAY OF March A.D., 1960, IN PLAT BOOK 3 PAGE 129 IN THE OFFICE OF THE CLERK OF THE CIRCUIT COURT AT STUART, MARTIN COUNTY FLORIDA.
CIRCUIT COURT CLERK
Dorothy Poire
FILE NO. 74844



BLOCK 61
SAINT LUCIE INLET FARMS
SUBDIVISION PLAT BOOK 1,
PAGE 28, PUBLIC RECORDS
OF PALM BEACH COUNTY.

APPROVED March 22, 1960
BOARD OF COUNTY COMMISSIONERS
C. W. Lightner
CHAIRMAN

NOTE:
Radii of all returns is 25 ft. unless otherwise noted.
Bearings refer to the State Grid Azimuth as established by the Florida State Road Department.
An easement for public utilities is reserved over the rear 5' ft. of all lots, except those lots in Block 9.
Corner lot measurements are given to the intersection point of the tangents.

DEDICATION STATE OF FLORIDA } SS COUNTY OF MARTIN

Know all men by these presents that The Coral Gardens Development Corporation, a Corporation, organized and existing under the laws of the State of Florida, owner of the land described under the title caption above, has caused said land to be subdivided and platted as shown hereon, and does hereby dedicate, to the perpetual use of the public, the roads and drainage facilities and areas shown hereon, reserving however unto itself, its legal representatives or assigns, the reversion or reversions thereof, whenever the same may be abandoned or discontinued by law. In witness whereof it has caused these presents to be signed by its President and its corporate seal to be affixed and attested by its Secretary, this 17 day of March, A.D., 1960

CORAL GARDENS DEVELOPMENT CORPORATION
Louis V. Beal WITNESS
Stephen Messena PRESIDENT
Raymond J. Towell WITNESS
Raymond J. Towell SECRETARY

ACKNOWLEDGEMENT STATE OF FLORIDA } SS COUNTY OF MARTIN

Before me this day personally appeared Stephen Messena and Raymond J. Towell, President and Secretary, respectively, of Coral Gardens Development Corporation, well known to me to be the persons who executed the foregoing dedication of plat, in behalf of said Corporation, and who acknowledged to and before me that they executed the same for the uses and purposes therein stated. Witness my hand and official seal at this 17th day of March, A.D., 1960

Robert L. Taylor NOTARY PUBLIC
MY COMMISSION EXPIRES March 16th 1962

CERTIFICATE STATE OF FLORIDA } S S COUNTY OF MARTIN

I hereby certify that the attached plat is a true and correct representation of a survey, made under my direction, and that said survey was accurate to the best of my knowledge and belief, and that permanent reference monuments were placed as required by law.

Hubert A. Stafford REGISTERED LAND SURVEYOR
FLORIDA CERTIFICATE NO. 443
Subscribed and sworn to before me this 22nd day of March 22nd A.D., 1960 at Stuart, Florida
Letitia Zarnita NOTARY PUBLIC
MY COMMISSION EXPIRES July 6, 1960

STAFFORD BROCK
ENGINEERS & SURVEYORS
53 EAST OCEAN BLVD
STUART, FLORIDA